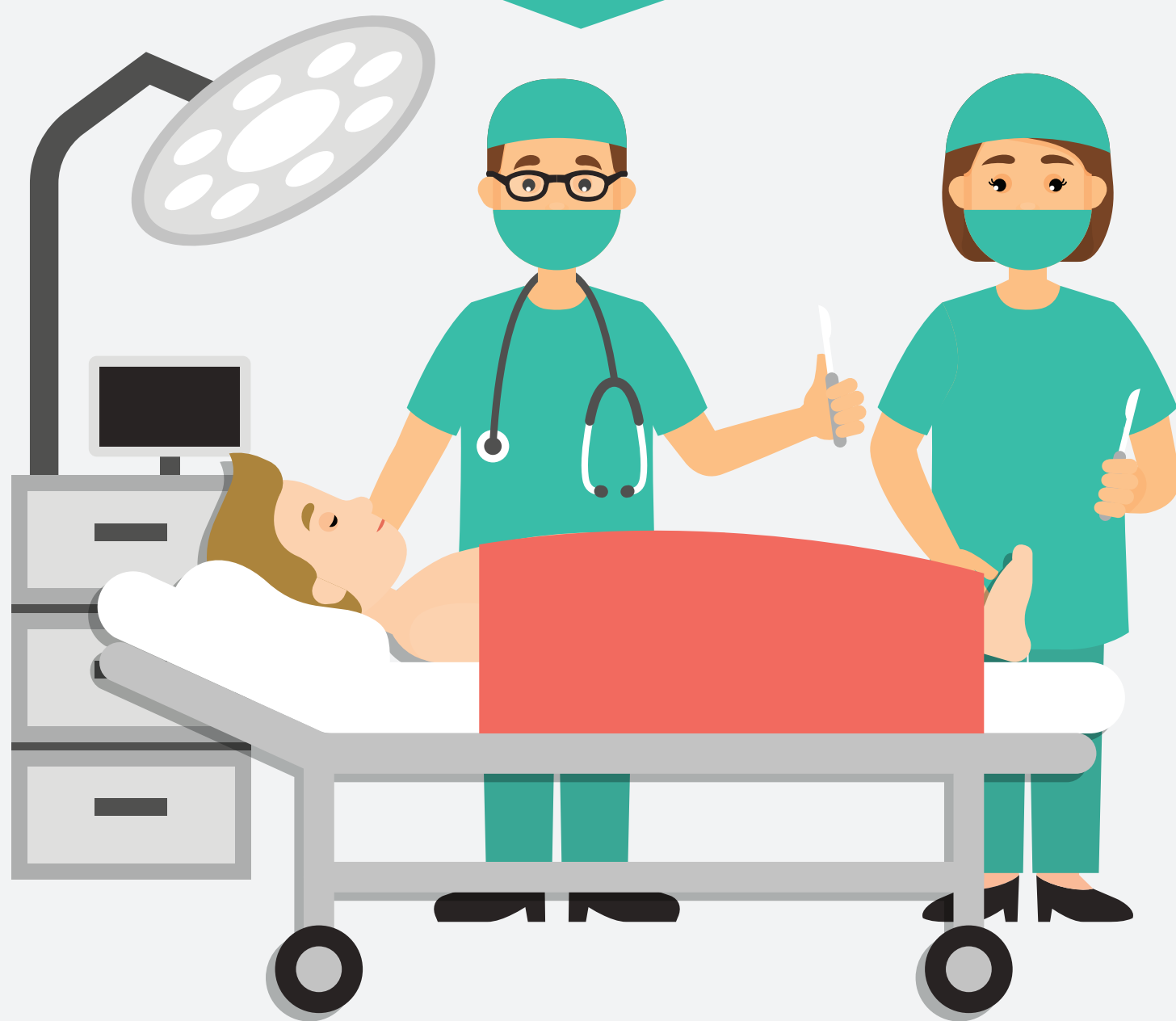


SURGICAL ERRORS



4,000 SURGICAL ERRORS OCCUR EVERY YEAR IN THE UNITED STATES.

WHAT ARE WSPEs?

WSPE IS THE SHORTHAND FOR WRONG-SITE, WRONG-PROCEDURE, WRONG-PATIENT ERRORS.

THESE ERRORS HAPPEN WHEN A SURGEON...

- Operates on the wrong body part or
- Performs the wrong procedure on the wrong patient.

60%



The most common of these errors is operating on the wrong side of a patient, which makes up nearly 60% of WSPEs.



FOREIGN OBJECTS LEFT INSIDE PATIENTS



- Every day in the United States, there are approximately 12 instances of surgeons' leaving foreign objects inside patients.
- The most common object left inside patient is a surgical sponge.
- In some cases, items are left inside patients for years after the surgery.
- These mistakes can have massive consequences on a patient's health, including infection, digestive problems and intense pain.

OTHER SURGICAL ERRORS INCLUDE



Anesthesia-related errors



Surgical-site infections



Air bubbles in a central line tube

ERRORS CAN BE CAUSED BY SEVERAL FACTORS, INCLUDING:



MISCOMMUNICATION BEFORE OR DURING SURGERY



DISTRACTION BY DOCTORS OR NURSES



MISLABELING OF A PATIENT'S INFORMATION



FATIGUE OF DOCTORS OR NURSES

OUR SURGICAL ERROR ATTORNEYS CAN HELP

CALL 800.529.6600

www.wnwlaw.com



WAPNER NEWMAN

ATTORNEYS AT LAW

sources:

<https://psnet.ahrq.gov/primers/primer/18/wrong-site-wrong-procedure-and-wrong-patient-surgery>
<https://www.usatoday.com/story/news/nation/2013/03/08/surgery-sponges-lost-supplies-patients-fatal-risk/1969603/>
<https://www.cnn.com/2012/06/09/health/medical-mistakes/index.html>