



# BRAIN INJURY

A traumatic brain injury occurs because of a blow or jolt to the head that affects brain function.

TBI can increase chances of developing epilepsy, Alzheimer's disease and Parkinson's disease, among other brain disorders.

# 153

PEOPLE DIE EVERY DAY IN THE UNITED STATES FROM INJURIES INCLUDING TBI



# 50,000

 PEOPLE DIE EVERY YEAR FROM TBI

## THE THREE LEADING CAUSES OF TBI ARE:



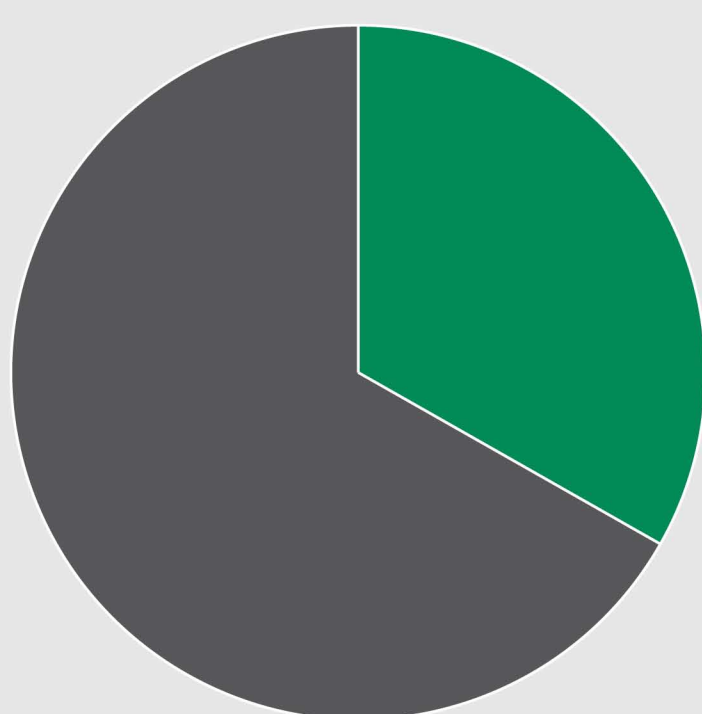
**Falls** account for 40.5% of TBIs in the United States. More than half (55%) of TBIs in children and over 80% of TBIs in adults are caused by falls.



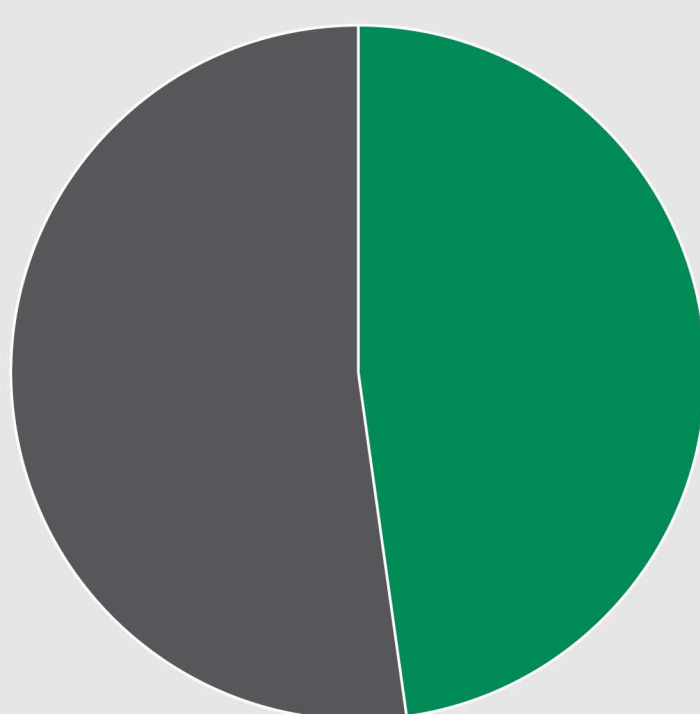
**Being struck by/against an object** causes 15.5% of TBIs in the United States. Being struck by or against an object is classified as unintentional blunt trauma.



**Vehicle crashes** are the third leading cause of TBIs, accounting for 14.3% of TBI in the United States. Vehicle crashes are the second leading cause of TBI-related deaths.



TBI CONTRIBUTES TO NEARLY ONE-THIRD OF INJURY-RELATED DEATHS.



43% OF THOSE HOSPITALIZED FOR TBI HAVE A DISABILITY ONE YEAR AFTER THE INJURY.

## CONSEQUENCES OF TBI INCLUDE:

ANXIETY

MEMORY LOSS

DEPRESSION

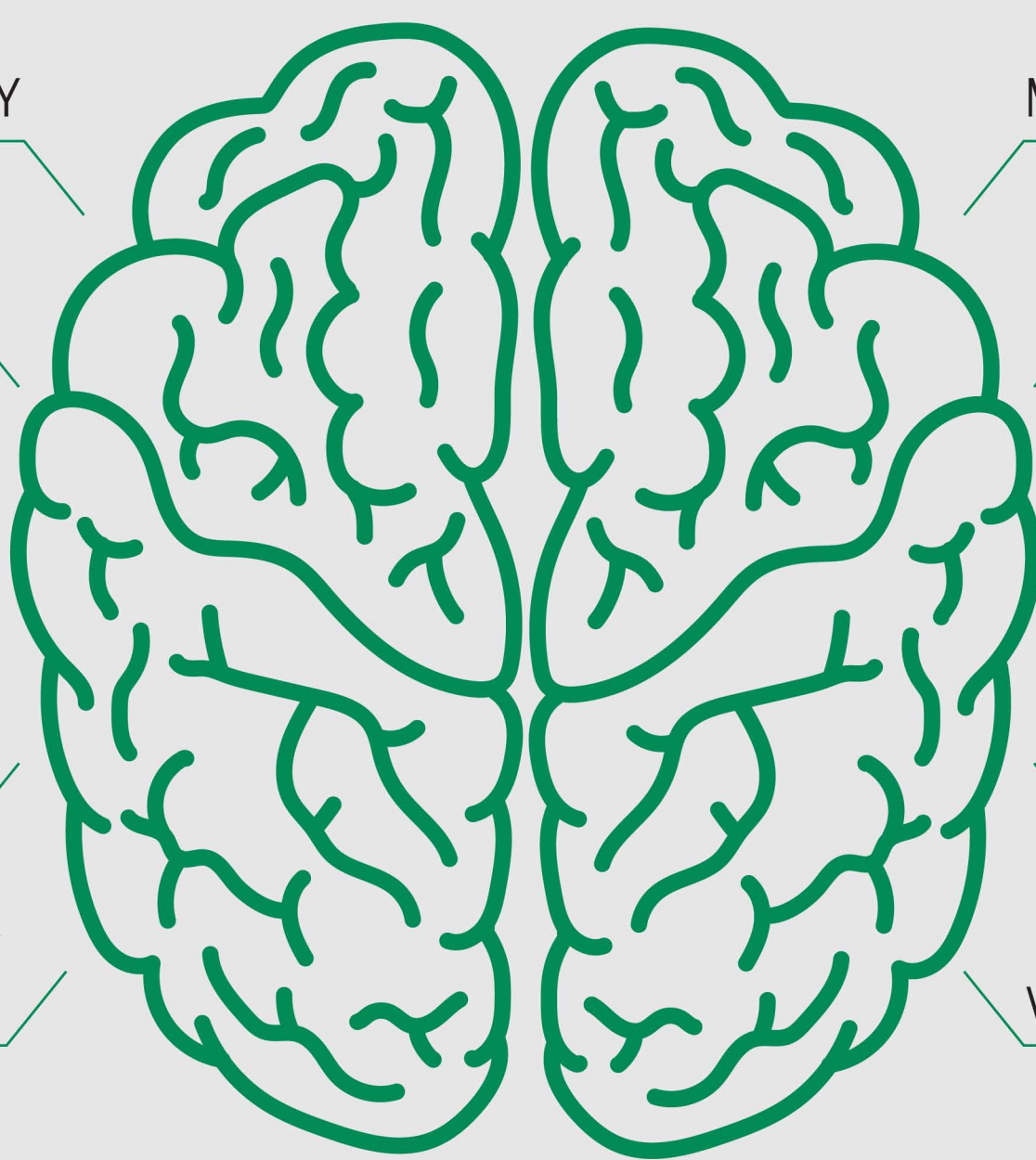
IMPAIRED MOTOR FUNCTION

DIFFICULTY PROCESSING LANGUAGE

HEARING LOSS

PERSONALITY CHANGES

VISION LOSS



IF YOU OR A LOVED ONE HAS SUFFERED A BRAIN INJURY DUE TO SOMEONE ELSE'S NEGLIGENCE OR WRONGDOING, MAKE SURE YOU ARE GETTING THE COMPENSATION YOU DESERVE.

## CALL 1.800.LAW.6600

<http://www.wnwlaw.com/brain-injuries>

### RESOURCES:

[https://www.cdc.gov/traumaticbraininjury/get\\_the\\_facts.html](https://www.cdc.gov/traumaticbraininjury/get_the_facts.html)



**WAPNER**NEWMAN  
ATTORNEYS AT LAW